

**CIMB PLAZA**

# Advertisement Spaces

*Updated as at 7 Feb 2025*

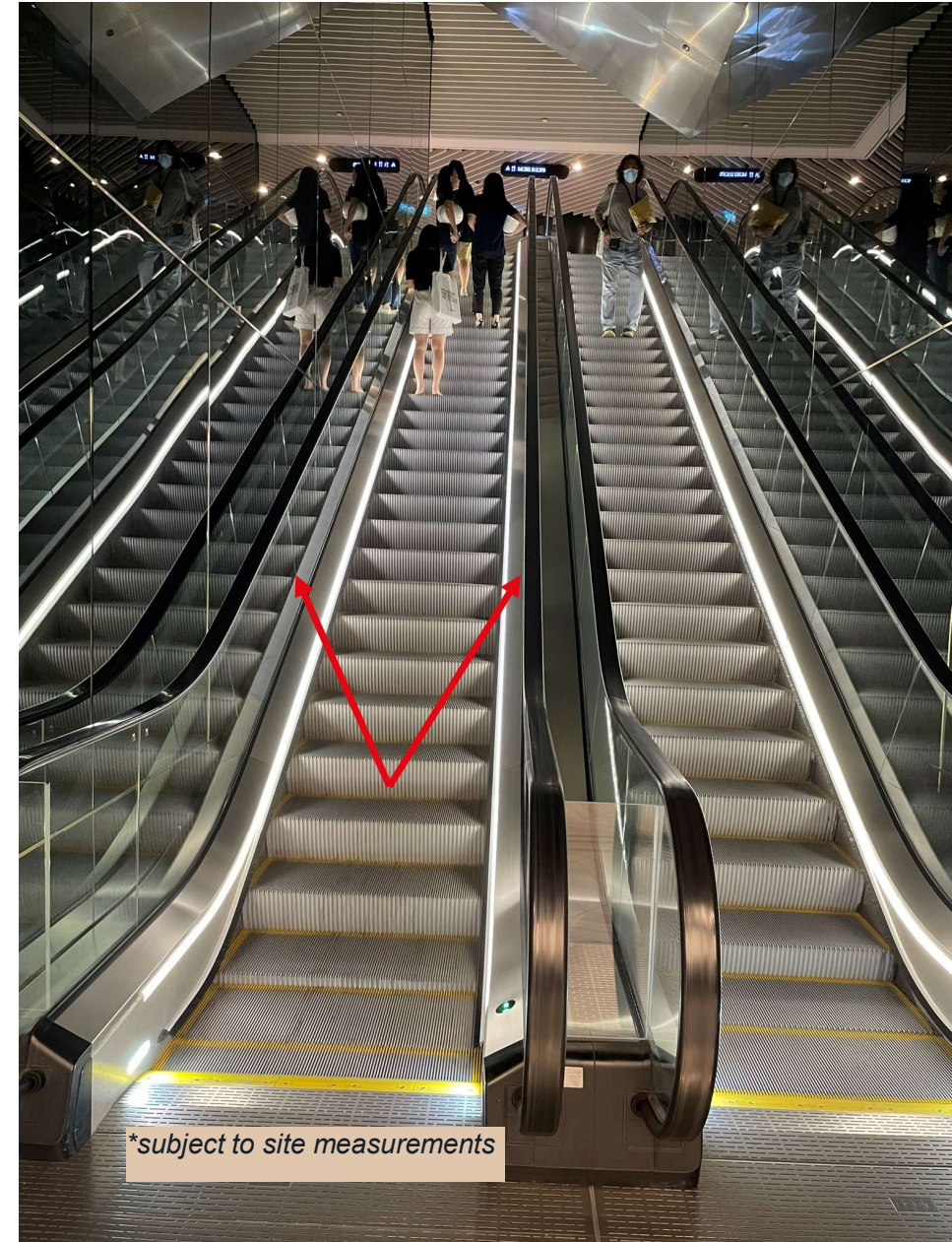
 **JLL** SEE A BRIGHTER WAY



## B1 to L1 escalator glass panels

### **Published rate:**

\$2,000 for 4 weeks per set of escalator

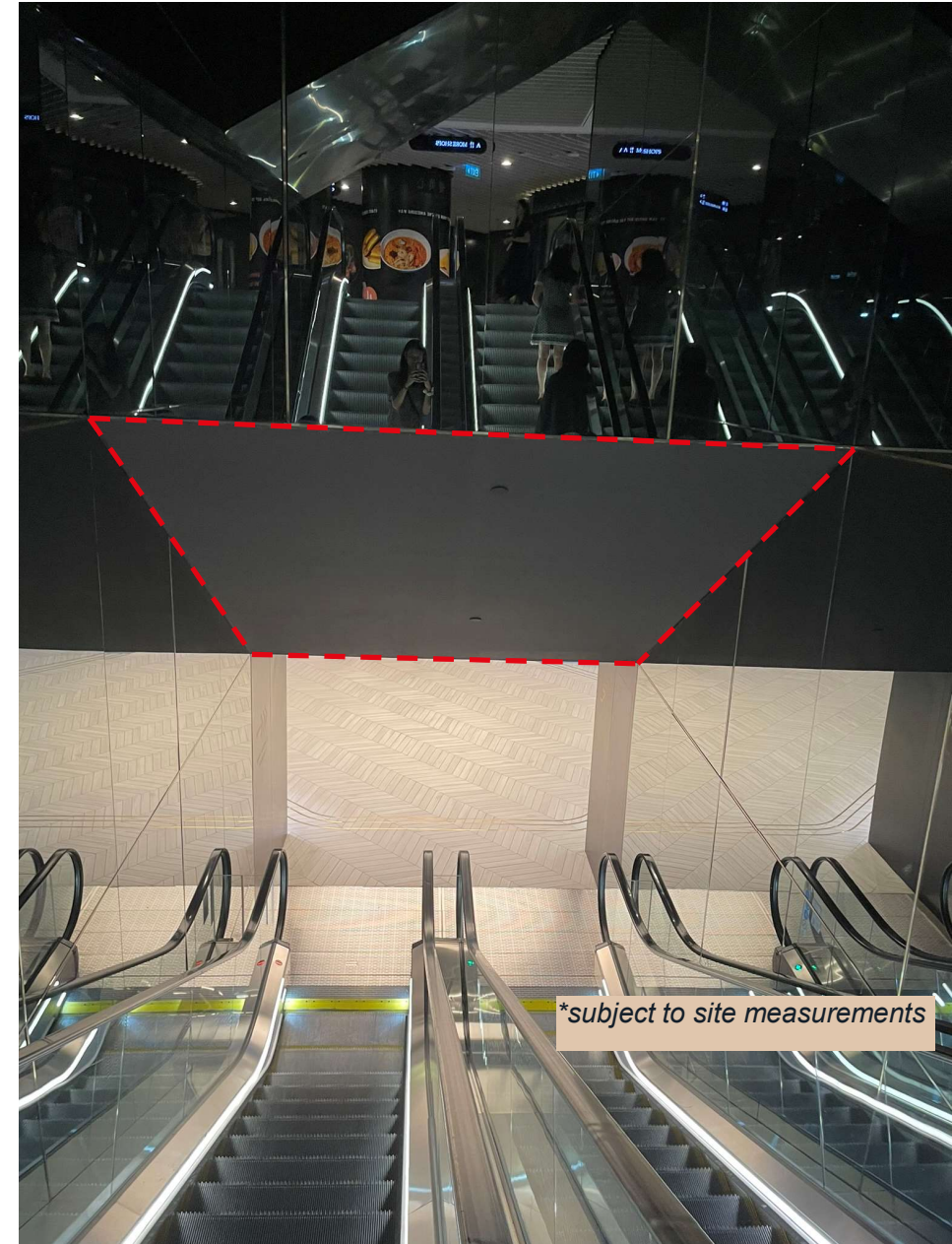




B1 to L1 escalator overhead

**Published rate:**

\$3,000 for 4 weeks

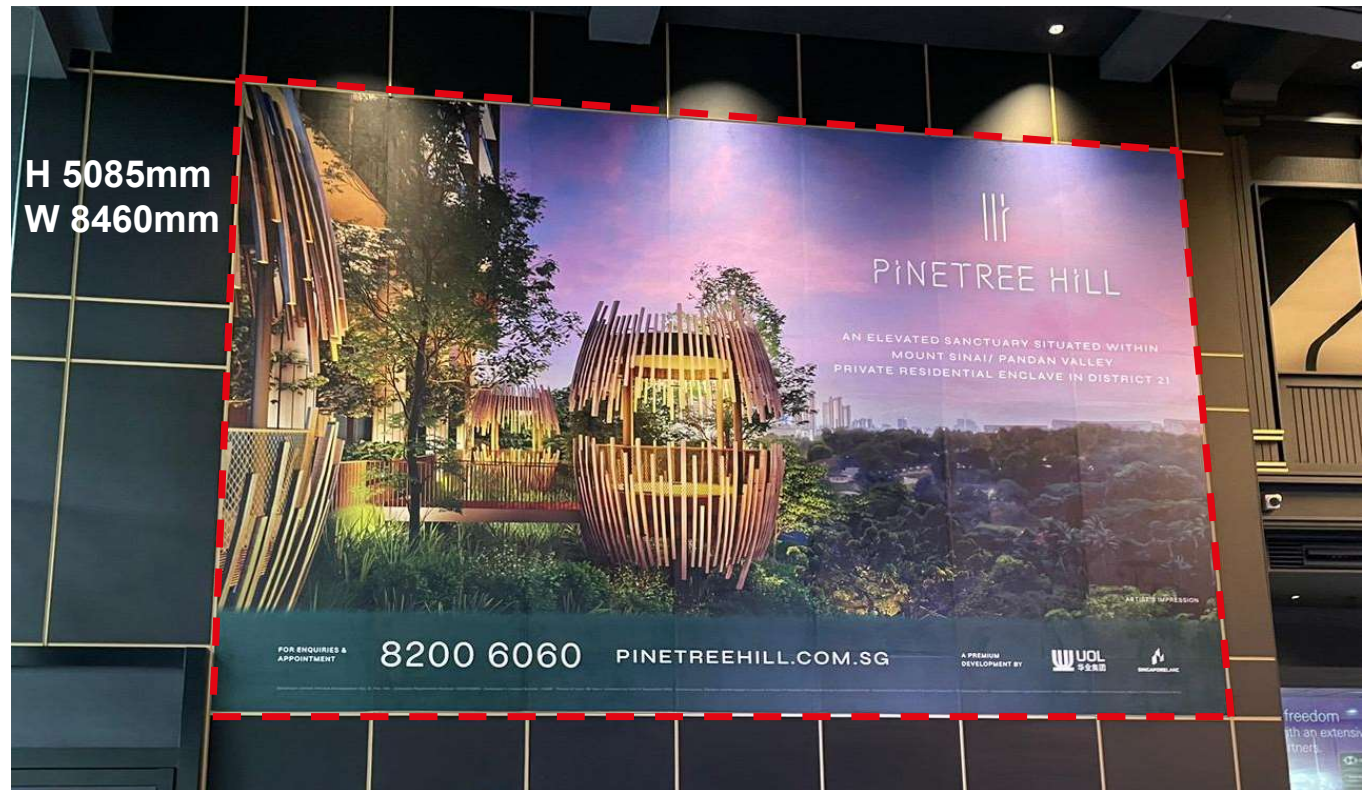


# Event Space Wall 1A

Location: L1 main wall at Raffles Green entrance

**Published rate:**

\$18,000 for 4 weeks



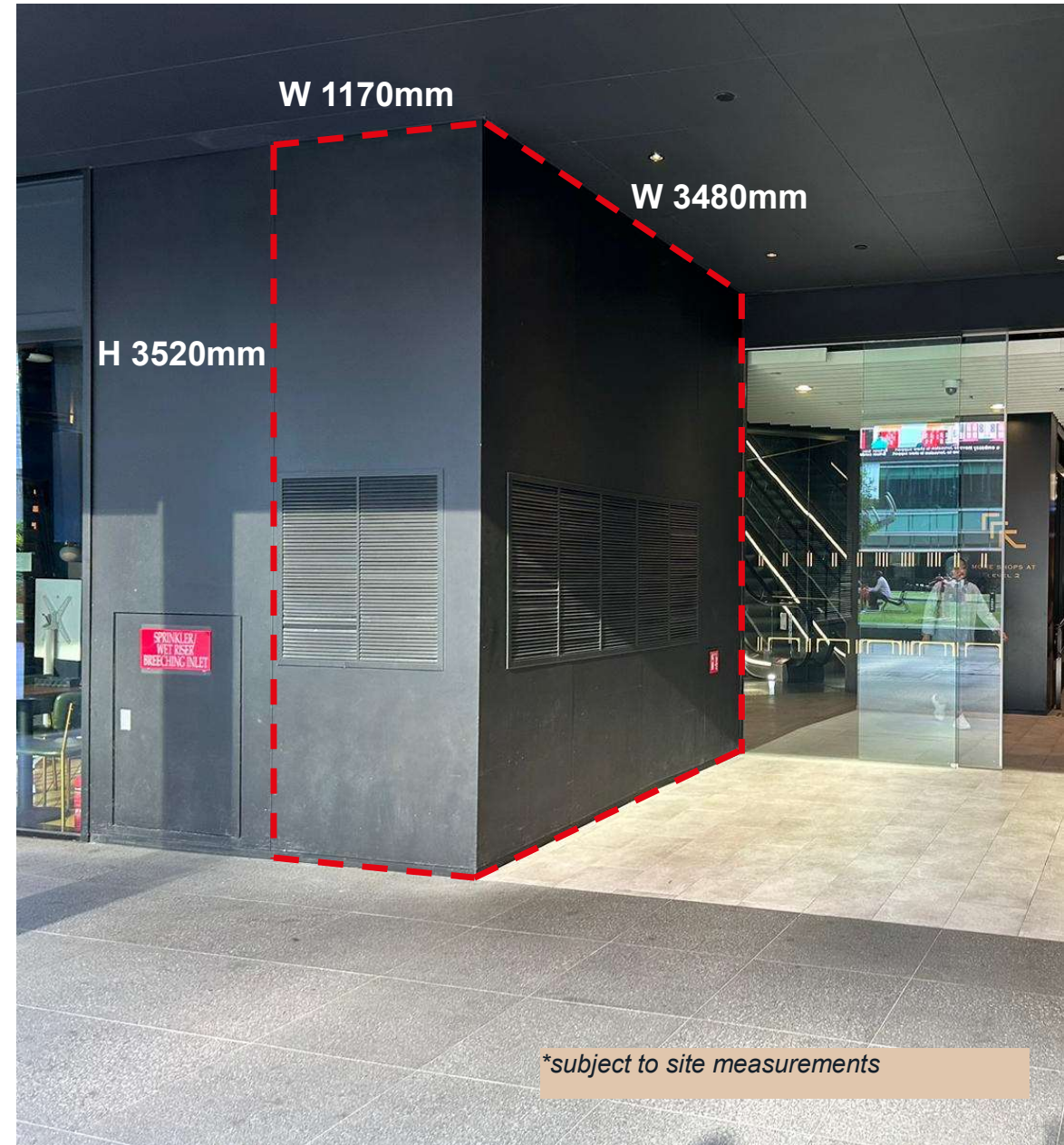


# L-wall

Location: L1 beside WaaCow!

Published rate:

\$6,000 for 4 weeks



# L1 Wall 1/2/3

Location: L1 Walls at Raffles Green Entrance

Published rate:

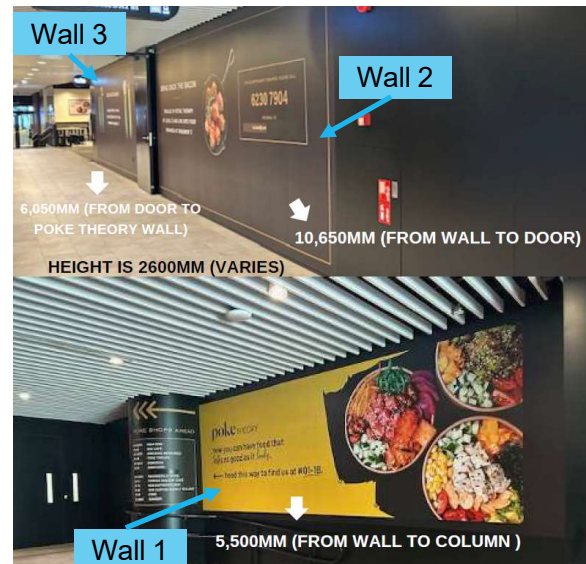
\$600 / frame for 4 weeks

Total no. of frames on all 3 walls: 8 frames

Size of frames:

- **Wall 1:** 1m x 1m x 3 units
- **Wall 2:** 1.5m x 1.5m x 3 units
- **Wall 3:** 1.5m x 1.5m x 2 units

For reference (onsite pictures)

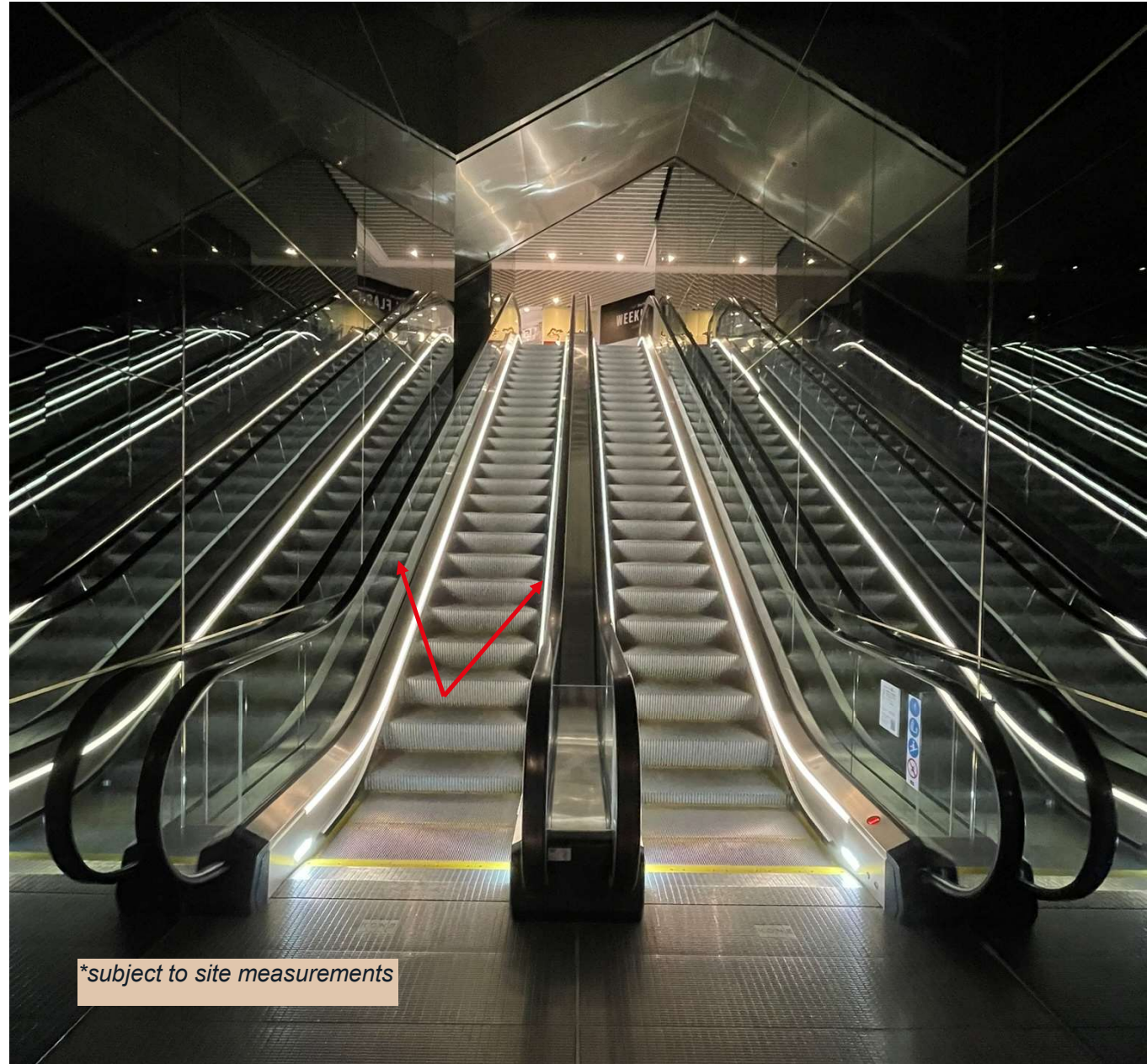




## L1 to L2 escalator glass panels

### **Published rate:**

\$2,000 for 4 weeks per set of escalator



*\*subject to site measurements*

# Thank you

